

Craters of the Moon Lands with Wilderness Characteristics Inventory Summary Report

The inventory for lands with wilderness characteristics was started by determining where past inventories have been conducted, if they can be considered current, and where new inventories need to happen. A geographic information system (GIS) was used heavily throughout the process.

GIS information was used to divide the Plan Area into polygons in order to determine if the size criteria outlined in BLM Manual 6310 CFR 43 was met. The initial process was actually performed for the entire Twin Falls District (TFD) in response to a district-spanning project. This allowed for consistency in process steps as new projects required lands with wilderness characteristics inventories.

The process listed below was completed for all of TFD:

- Compiled all significant linear man-made features that could be used to break up the landscape into areas where "...the imprint of man's work is substantially unnoticeable". The input features used to break up the BLM lands are as follows:
 - Burley & Shoshone OHV Inventory Characterizing Improved/Maintained Roads
 - A, B and C Roads as defined in the Craters of the Moon Monument Management Plan (Improved/Maintained Roads)
 - Idaho BLM FAMS Resources Base Data Roads and FAMS Roads (Improved/Maintained Roads)
 - Idaho BLM FAMS Resources Base Data Railroads
 - Idaho BLM FAMS Resources Base Data Transmission Lines
 - USGS NHD Canals/Ditches
- These features were compiled, buffered by 10' (both sides) to represent the total footprint of the feature and 'erased' from BLM lands within 5 miles of the Twin Falls District to create our Twin Falls District lands with wilderness characteristics inventory units.

The inventory units in the Craters of the Moon MMP Amendment area were selected for an office review by an ID Team. The ID Team evaluated these areas noting whether polygons were greater than or less than 4,500 acres and/or adjacent to Wilderness Study Areas (WSA) or Wilderness areas (BLM or NPS). More detailed GIS data such as NAIP (aerial photography), Range Improvements, Transmission Lines, Land Treatments, etc. were used to further refine these possible inventory unit boundaries. This office exercise acted as a means to define which areas qualify for in depth field inventory based on the adjacency and size criteria.

After the ID Team provided input in the office, field inventories were conducted by ID Team members to further evaluate boundaries, naturalness, and outstanding opportunities for solitude or a primitive and unconfined type of recreation based on the guidance found in BLM Manual 6310.06.C.

Determinations on Lands with Wilderness Characteristics

ID Team meetings were held to collectively evaluate field inventory data and come to consensus on final determinations of boundaries, naturalness, outstanding opportunities for solitude or a primitive and unconfined type of recreation.

The inventory evaluated wilderness characteristics as defined in Section 2(c) of the Wilderness Act and incorporated in Federal Land Policy and Management Act of 1976 (FLPMA). In order for an area to qualify as lands with wilderness characteristics, it must possess sufficient size, naturalness, and outstanding opportunities for either solitude or primitive and unconfined recreation. In addition, it may also possess supplemental values.

Areas evaluated satisfied the size criteria by meeting one of the following situations and circumstances:

- Roadless areas with over 5,000 acres of contiguous BLM lands. State or private lands are not included in making this acreage determination.
- Roadless areas of less than 5,000 acres of contiguous BLM lands where they are contiguous with lands which have been formally determined to have wilderness or potential wilderness values, or any Federal lands managed for the protections of wilderness characteristics (e.g., BLM Wilderness Study Areas)

Areas evaluated satisfied the naturalness when they appeared to have been affected primarily by the forces of nature and any work of human beings were substantially unnoticeable. Human impacts were reviewed to assess the presence or absence of apparent naturalness of the areas while using caution to assess the effect of relatively minor human impacts on naturalness. When several minor impacts existed, their cumulative effects were analyzed on the area's degree of apparent naturalness.

In determining if an area provided an outstanding opportunity for solitude, factors such as size, configuration, topographic and vegetative screening, and ability of the visitor to find seclusion were considered as they affect a visitor's opportunity to avoid the sights, sounds, and evidence of other people in the area. In determining if an area provided an outstanding opportunity for primitive and unconfined recreation activities were considered that provide dispersed, undeveloped recreation which do not require facilities, motor vehicles, motorized equipment, or mechanized transport. The area did not have to possess outstanding opportunities for both elements, nor does it need to have outstanding opportunities on every acre, even when an area is contiguous to lands with identified wilderness characteristics. Each area was assessed on its own merits or in combination with any contiguous BLM Wilderness Study Areas to determine whether an outstanding opportunity exists.

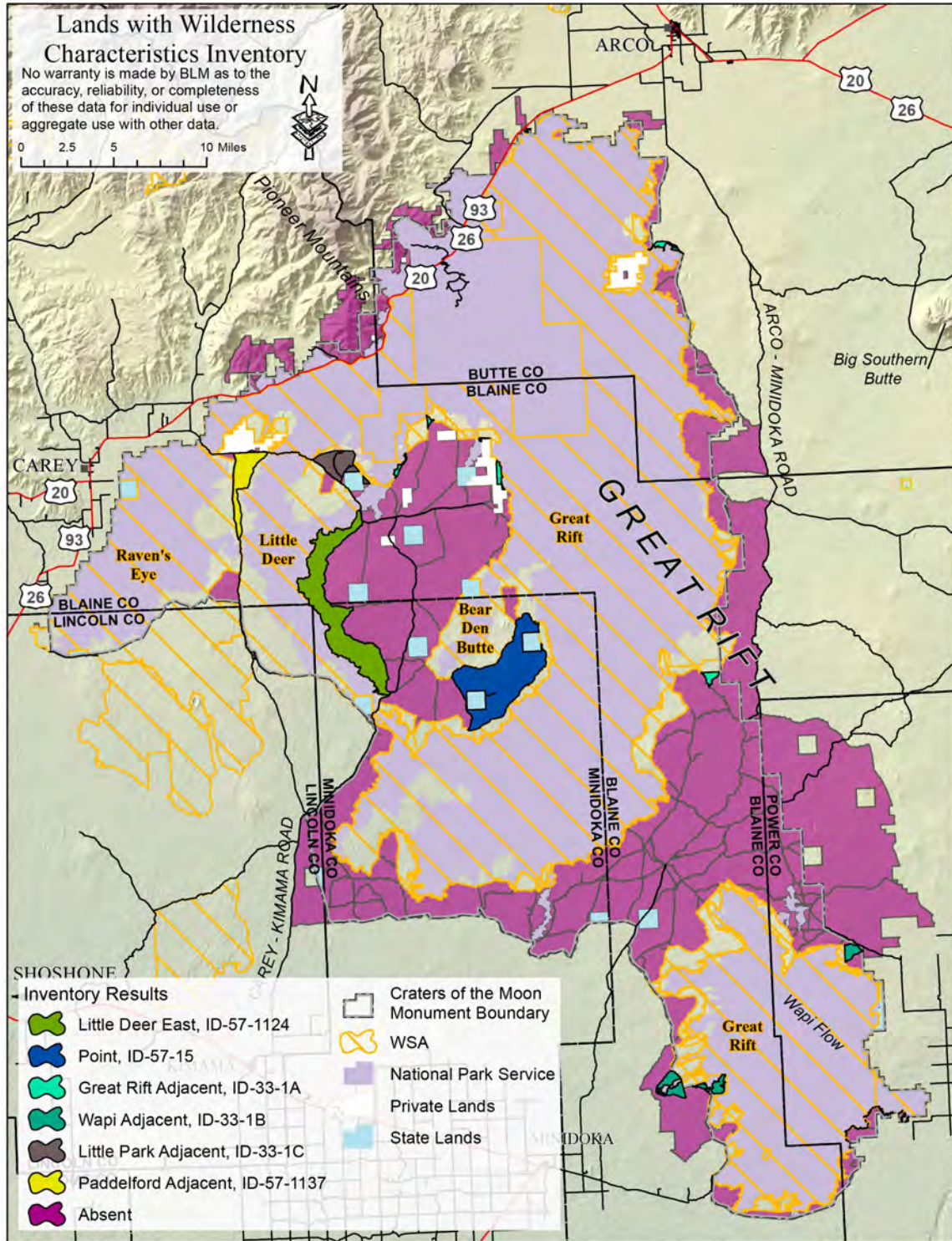


Figure G.1. Monument Inventory Overview Map

Little Deer East ID-57-1124

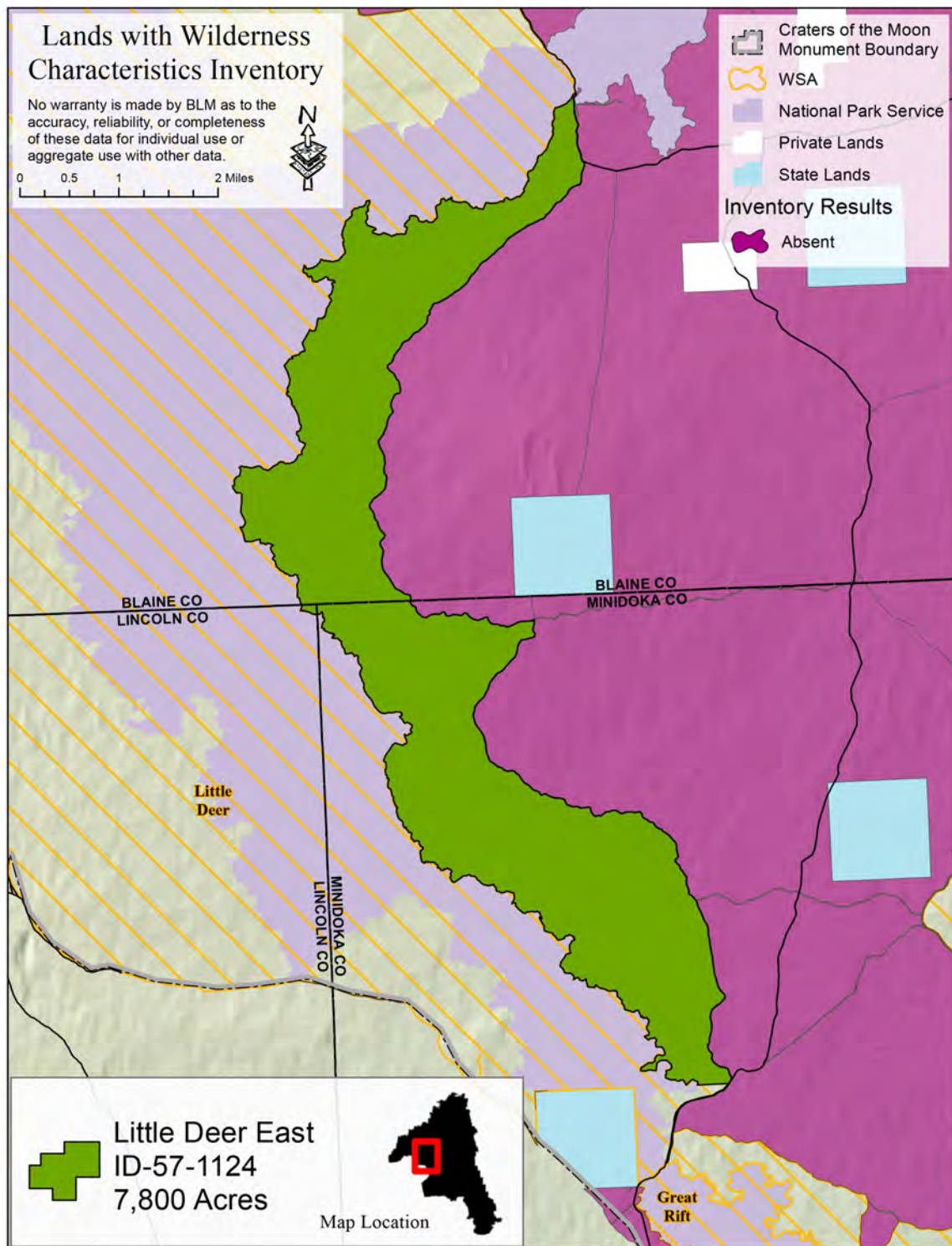


Figure G.2. ID-57-1124

Summary of Analysis*

Area Unique Identifier: ID-57-1124 (Little Dear East)

Summary

Results of analysis:

(Note: explain the inventory findings for the entirety of the inventory unit. When wilderness characteristics have been identified in an area that is smaller than the size of the total inventory unit, explain why certain portions of the inventory unit are not included within the lands with wilderness characteristics (e.g. the inventory found that certain parts lacked naturalness).

1. Does the area meet any of the size requirements? Yes ___ No
2. Does the area appear to be natural? Yes ___ No ___ N/A
3. Does the area offer outstanding opportunities for solitude or a primitive and unconfined type of recreation? Yes ___ No ___ N/A
4. Does the area have supplemental values? Yes ___ No ___ N/A

Check one:

The area, or a portion of the area, has wilderness characteristics and is identified as lands with wilderness characteristics.

The area does not have wilderness characteristics.

Prepared by (team members):

Nathan Jayo (Park Ranger) May 30, 2014

Cassandra Mavencamp (GIS Specialist) May 30, 2014

Reviewed by (District or Field Manager):

Name: Holly Crawford

Title: Monument Manager

Date: 12/4/2015

* This form documents information that constitutes an inventory finding on wilderness characteristics. It does not represent a formal land use allocation or a final agency decision subject to administrative remedies under either 43 CFR parts 4 or 1610.5-3.

This unit was originally inventoried in the 1980s and was not found to have wilderness characteristics at that time due to numerous reservoir developments, access routes associated with the reservoirs, and fences.

Size: 7,800 acres

Naturalness: In the 1980 Intensive Wilderness Inventory this unit was part of the Little Deer inventory unit but was deleted from the Little Deer WSA boundary because it contained 11 reservoir developments and two access routes which had noticeable imprints on the apparent naturalness of the unit. During the 2014 lands with wilderness characteristics inventory these human impacts were minimal and mostly unnoticeable. The land slopes down from the eastern boundary road and the topography varies, making the road less visible from within the unit which further reduces the sights of human impacts.

Outstanding opportunities for solitude or a primitive and unconfined type of recreation: Unit offers opportunities for hiking, hunting, and exploring. Unit offers outstanding opportunities for solitude.

Supplemental values: None.

Point ID-57-15

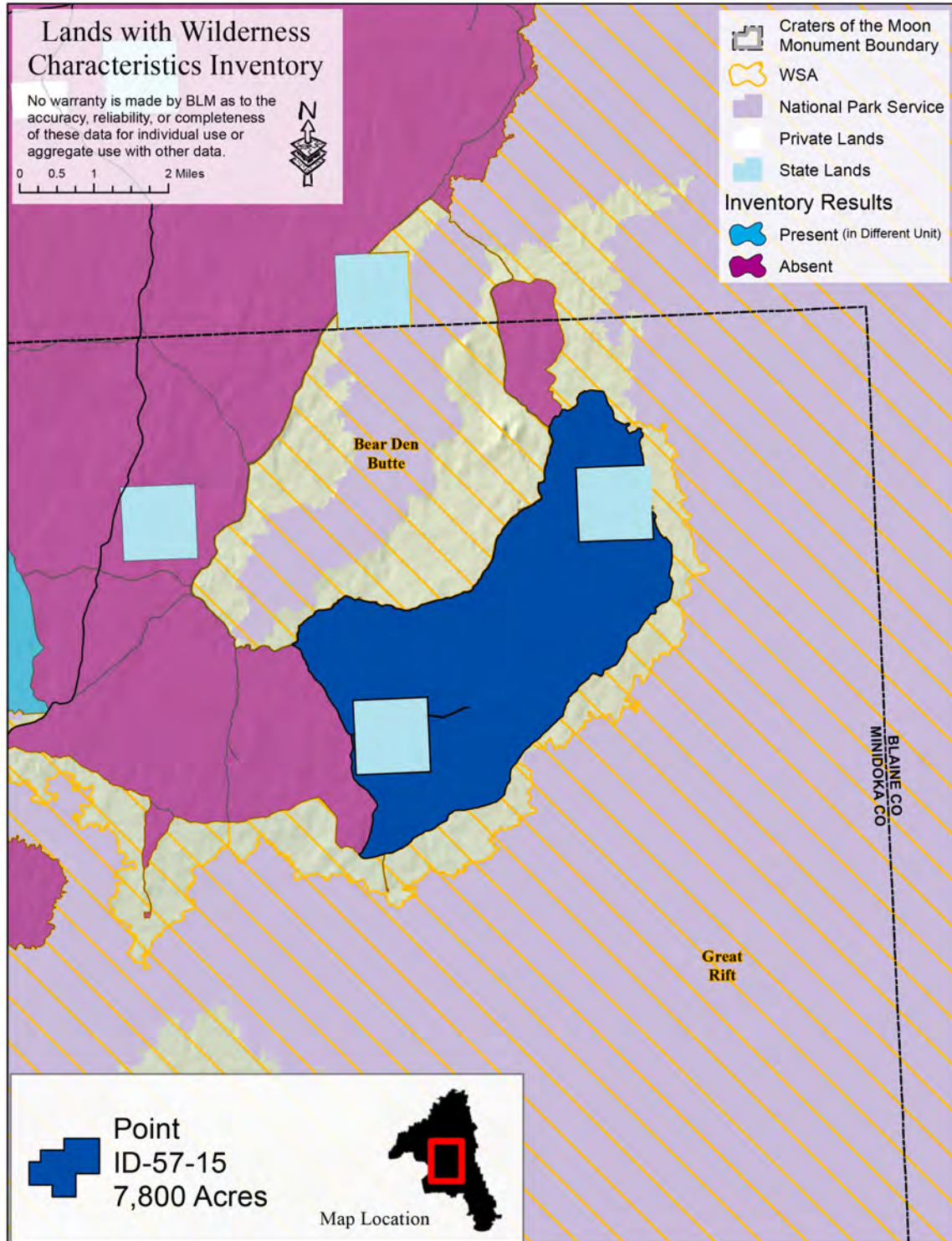


Figure G.3. ID-57-15

Summary of Analysis*

Area Unique Identifier: ID-57-15 (Point)

Summary

Results of analysis:

(Note: explain the inventory findings for the entirety of the inventory unit. When wilderness characteristics have been identified in an area that is smaller than the size of the total inventory unit, explain why certain portions of the inventory unit are not included within the lands with wilderness characteristics (e.g. the inventory found that certain parts lacked naturalness).

1. Does the area meet any of the size requirements? Yes No
2. Does the area appear to be natural? Yes No N/A
3. Does the area offer outstanding opportunities for solitude or a primitive and unconfined type of recreation? Yes No N/A
4. Does the area have supplemental values? Yes No N/A

Check one:

The area, or a portion of the area, has wilderness characteristics and is identified as lands with wilderness characteristics.

The area does not have wilderness characteristics.

Prepared by (team members):

Nathan Jayo (Park Ranger) June 12, 2014

Cassandra Mavencamp (GIS Specialist) June 12, 2014

Reviewed by (District or Field Manager):

Name: Holly Crawford

Title: Monument Manager

Date: 12/4/2015

* This form documents information that constitutes an inventory finding on wilderness characteristics. It does not represent a formal land use allocation or a final agency decision subject to administrative remedies under either 43 CFR parts 4 or 1610.5-3.

This unit was originally inventoried in the 1980s and was not found to have wilderness characteristics at that time due to a lack of outstanding opportunities for solitude and for primitive recreation.

Size: 7,800 acres

Naturalness: This unit contains relatively low rolling hills, lava blisters, and vast grass areas. Some small isolated areas have visible drill rows from seeding applications but are mostly unnoticeable. Bear Den Lake has a short access road and the lake has signs of human uses. Point Lake has signs of human use. Overall, the human impacts at these lakes and elsewhere in the unit are substantially unnoticeable.

Outstanding opportunities for solitude or a primitive and unconfined type of recreation: In the 1980 Intensive Wilderness Inventory it was determined that this unit did not offer outstanding opportunities for solitude and for primitive recreation. The 1980 Intensive Wilderness Inventory narrative for solitude states, “The Point Unit has been judged to not contain outstanding opportunities for solitude. Screening due to vegetation and topography is minimal. The relatively small size of the unit combined with the generally poor screening renders any opportunities for solitude to be less than outstanding.” The narrative for primitive and unconfined recreation states, “Although the Point Unit does contain opportunities for recreational activities of a primitive and unconfined nature, these opportunities have been judged not to be outstanding. The small size of the unit plus the lack of an interesting land form has constraining effects on the type and quality of primitive and unconfined recreational activities.”

During the 2014 lands with wilderness characteristics inventory, it was determined that this unit does offer remarkably outstanding opportunities for solitude. On page 8 of BLM Manual 6310 – “Conducting Wilderness Characteristics Inventory on BLM Lands”, it indicates that outstanding opportunities for solitude can be found in areas lacking vegetation or topographic screening. This area is very remote and seldom visited; therefore, sights and sounds of people are easily avoided with the minimal vegetative or topographic screening. The ability of the visitor to find seclusion throughout this unit is easily achieved.

The unit does offer opportunities for recreational activities of a primitive and unconfined nature; however, it was determined that these opportunities were not outstanding. This is in agreement with the 1980 Intensive Inventory.

Supplemental values: There were supplemental values identified during the Intensive Wilderness Inventory of 1980. They were wildlife observations of: Golden eagle, female marsh hawk, yellow-headed blackbird, an unidentified shorebird - possibly a solitary sandpiper or an upland plover, a burrowing owl, and several herds of antelope. During the lands with wilderness characteristics inventory, there was a herd of elk observed in the unit. There has also been documentation of sage grouse using the area along the lava’s edge to the east. Although this particular area is outside of the unit, sage grouse may travel through the unit to access this documented habitat.

Great Rift Adjacent ID-33-1A and Wapi Adjacent ID-33-1B

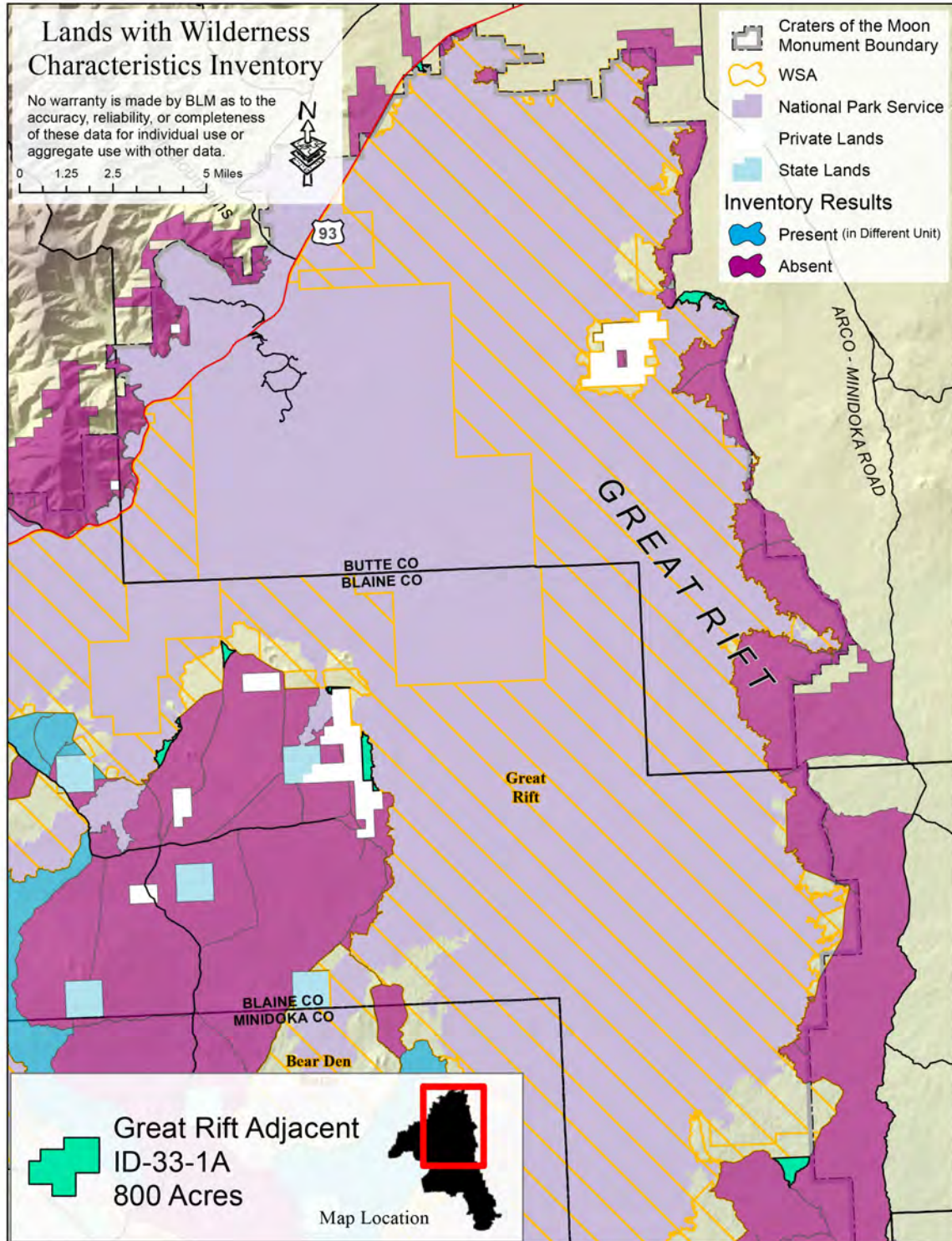


Figure G.4. ID-33-1A

Summary of Analysis* Area

Unique Identifier: ID-33-1A (Great Rift Adjacent)

Summary

Results of analysis:

(Note: explain the inventory findings for the entirety of the inventory unit. When wilderness characteristics have been identified in an area that is smaller than the size of the total inventory unit, explain why certain portions of the inventory unit are not included within the lands with wilderness characteristics (e.g. the inventory found that certain parts lacked naturalness).

1. Does the area meet any of the size requirements? Yes ___ No
2. Does the area appear to be natural? Yes ___ No ___ N/A
3. Does the area offer outstanding opportunities for solitude or a primitive and unconfined type of recreation? Yes ___ No ___ N/A
4. Does the area have supplemental values? Yes ___ No ___ N/A

Check one:

The area, or a portion of the area, has wilderness characteristics and is identified as lands with wilderness characteristics.

The area does not have wilderness characteristics.

Prepared by (team members):

Nathan Jayo (Park Ranger) June 13, 2014

Cassandra Mavencamp (GIS Specialist) June 13, 2014

Reviewed by (District or Field Manager):

Name: Holly Crawford

Title: Monument Manager

Date: 12/4/2015

* This form documents information that constitutes an inventory finding on wilderness characteristics. It does not represent a formal land use allocation or a final agency decision subject to administrative remedies under either 43 CFR parts 4 or 1610.5-3.

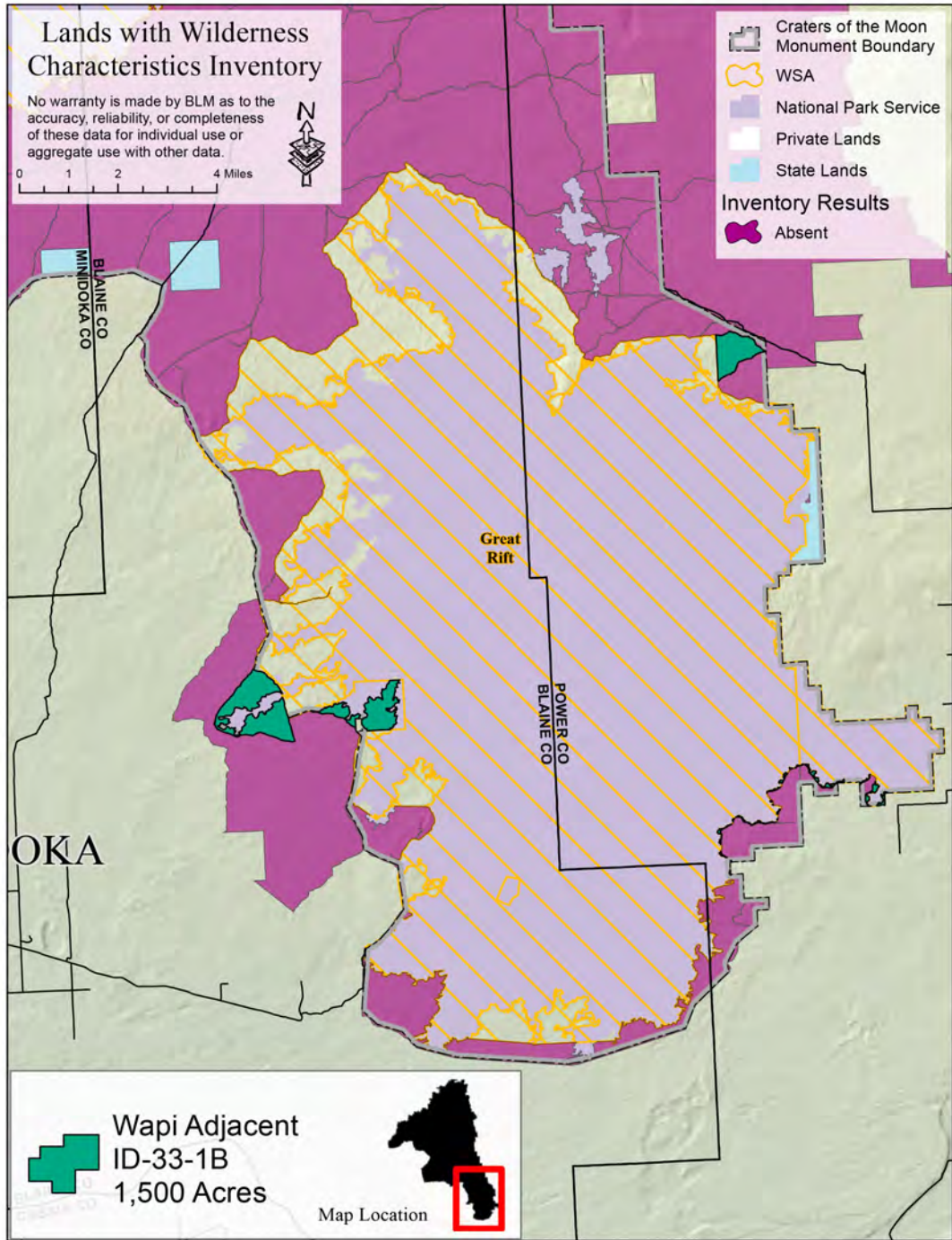


Figure G.5. ID-33-1B

Summary of Analysis* Area

Unique Identifier: ID-33-1B (Wapi Adjacent)

Summary

Results of analysis:

(Note: explain the inventory findings for the entirety of the inventory unit. When wilderness characteristics have been identified in an area that is smaller than the size of the total inventory unit, explain why certain portions of the inventory unit are not included within the lands with wilderness characteristics (e.g. the inventory found that certain parts lacked naturalness).

1. Does the area meet any of the size requirements? Yes ___ No
2. Does the area appear to be natural? Yes ___ No ___ N/A
3. Does the area offer outstanding opportunities for solitude or a primitive and unconfined type of recreation? Yes ___ No ___ N/A
4. Does the area have supplemental values? Yes ___ No ___ N/A

Check one:

The area, or a portion of the area, has wilderness characteristics and is identified as lands with wilderness characteristics.

___ The area does not have wilderness characteristics.

Prepared by (team members):

Nathan Jayo (Park Ranger) June 19, 2014

Cassandra Mavencamp (GIS Specialist) June 19, 2014

Reviewed by (District or Field Manager):

Name: Holly Crawford

Title: Monument Manager

Date: 12/4/2015

* This form documents information that constitutes an inventory finding on wilderness characteristics. It does not represent a formal land use allocation or a final agency decision subject to administrative remedies under either 43 CFR parts 4 or 1610.5-3.

These small units are less than 5,000 acres but are adjacent to the Great Rift Wilderness Study Area. In BLM Manual 6310(06)(C)(2), it describes criteria in which areas less than 5,000 acres may contain wilderness characteristics. The following units applied under the criteria of being contiguous with lands which have been formally determined to have wilderness or potential wilderness values, or any Federal lands managed for the protection of wilderness characteristics (BLM wilderness study areas).

Size: 800 acres for ID-33-1A. 1,500 acres for ID-331B.

Naturalness: These units appear to have been affected primarily by the forces of nature. Human-made features and other impacts do not exist, or are substantially unnoticeable, within these units.

Outstanding opportunities for solitude or a primitive and unconfined type of recreation: In combination with the adjacent wilderness study area, these units provide the same outstanding opportunities for solitude or primitive and unconfined recreation as found in the adjacent Great Rift WSA.

Supplemental values: None

Little Park Adjacent ID-33-1C

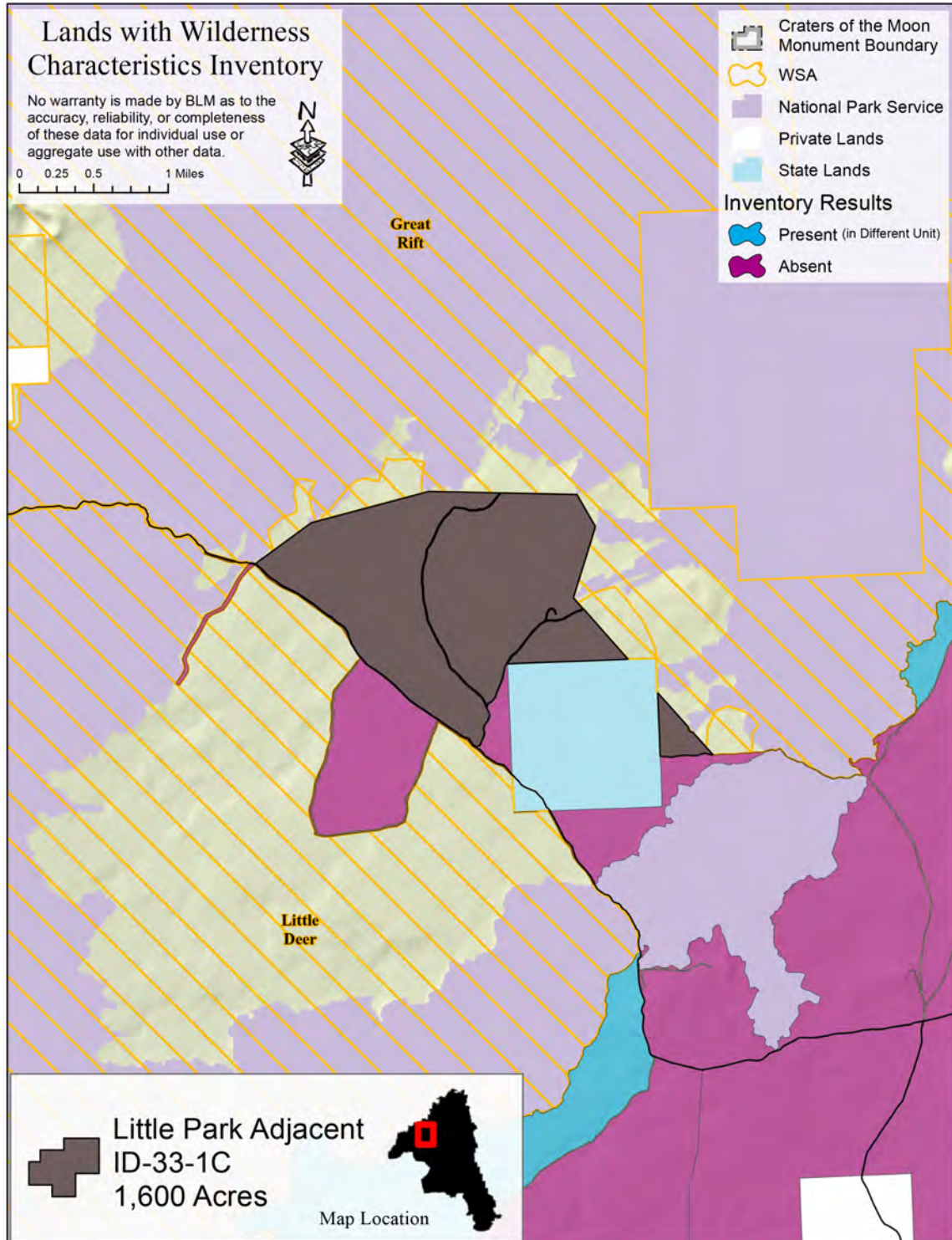


Figure G.6. ID-33-1C

Summary of Analysis*

Area Unique Identifier: ID-33-1C (Little Park Adjacent)

Summary

Results of analysis:

(Note: explain the inventory findings for the entirety of the inventory unit. When wilderness characteristics have been identified in an area that is smaller than the size of the total inventory unit, explain why certain portions of the inventory unit are not included within the lands with wilderness characteristics (e.g. the inventory found that certain parts lacked naturalness).

1. Does the area meet any of the size requirements? Yes No
2. Does the area appear to be natural? Yes No N/A
3. Does the area offer outstanding opportunities for solitude or a primitive and unconfined type of recreation? Yes No N/A
4. Does the area have supplemental values? Yes No N/A

Check one:

The area, or a portion of the area, has wilderness characteristics and is identified as lands with wilderness characteristics.

The area does not have wilderness characteristics.

Prepared by (team members):

Nathan Jayo (Park Ranger) May 20, 2014

Cassandra Mavencamp (GIS Specialist) May 20, 2014

Reviewed by (District or Field Manager):

Name: Holly Crawford

Title: Monument Manager

Date: 12/4/2015

* This form documents information that constitutes an inventory finding on wilderness characteristics. It does not represent a formal land use allocation or a final agency decision subject to administrative remedies under either 43 CFR parts 4 or 1610.5-3.

For this inventory, these units were initially seven inventory units that were divided by routes through the GIS exercise. After field verification, it was determined that several of the routes were substantially unnoticeable and did not warrant the units to be separated; therefore, the seven units become three. The larger unit has a cherry-stem running north and south and comes very close to the Great Rift WSA boundary to the north. The smaller two units are also adjacent to the State land parcel on the north and east. These units are less than 5,000 acres but are adjacent to the Great Rift Wilderness Study Area. In BLM Manual 6310(06)(C)(2), it describes criteria in which areas less than 5,000 acres may contain wilderness characteristics. The following unit applied under the criteria of being contiguous with lands which have been formally determined to have wilderness or potential wilderness values, or any Federal lands managed for the protection of wilderness characteristics (BLM wilderness study areas).

Size: 1,600 acres

Naturalness: The routes that initially divided these three units into the seven units were evaluated in the field and were substantially unnoticeable. The ID team determined that they were not significant enough to delineate the boundary, resulting in the combination of units. Human-made features and other impacts do not exist, or are substantially unnoticeable, within these units.

Outstanding opportunities for solitude or a primitive and unconfined type of recreation: In combination with the adjacent wilderness study areas, these units provide the same outstanding opportunities for solitude or primitive and unconfined recreation as found in the adjacent Great Rift WSA.

Supplemental values: None

Paddelford Adjacent ID-57-1137

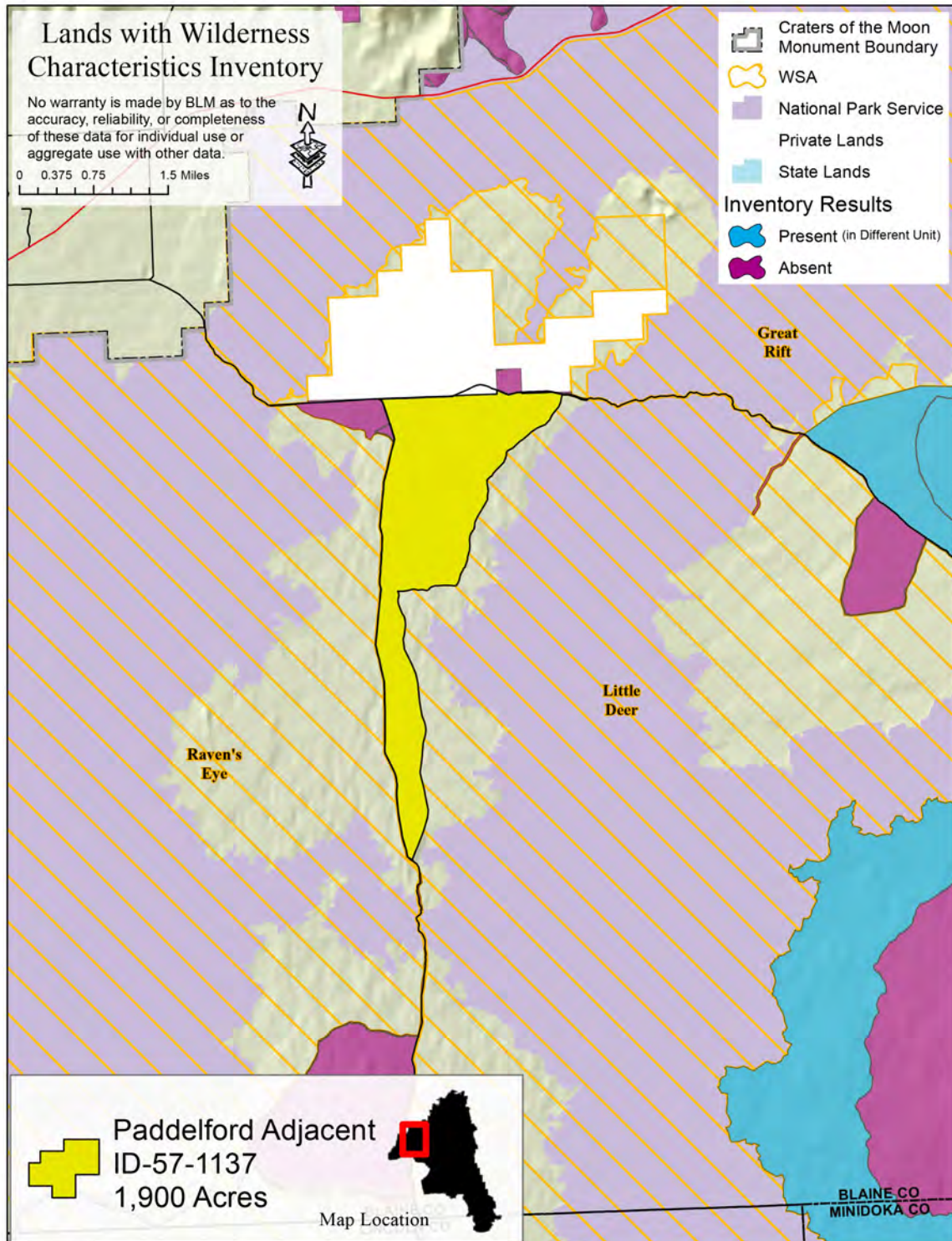


Figure G.7. ID-57-1137

Summary of Analysis*

Area Unique Identifier: ID-57-1137 (Paddelford Adjacent)

Summary

Results of analysis:

(Note: explain the inventory findings for the entirety of the inventory unit. When wilderness characteristics have been identified in an area that is smaller than the size of the total inventory unit, explain why certain portions of the inventory unit are not included within the lands with wilderness characteristics (e.g. the inventory found that certain parts lacked naturalness).

1. Does the area meet any of the size requirements? Yes ___ No
2. Does the area appear to be natural? Yes ___ No ___ N/A
3. Does the area offer outstanding opportunities for solitude or a primitive and unconfined type of recreation? Yes ___ No ___ N/A
4. Does the area have supplemental values? Yes ___ No ___ N/A

Check one:

The area, or a portion of the area, has wilderness characteristics and is identified as lands with wilderness characteristics.

The area does not have wilderness characteristics.

Prepared by (team members):

Nathan Jayo (Park Ranger) May 20, 2014

Cassandra Mavencamp (GIS Specialist) May 20, 2014

Reviewed by (District or Field Manager):

Name: Holly Crawford

Title: Monument Manager

Date: 12/4/2015

* This form documents information that constitutes an inventory finding on wilderness characteristics. It does not represent a formal land use allocation or a final agency decision subject to administrative remedies under either 43 CFR parts 4 or 1610.5-3.

For this inventory, this unit was initially two inventory units that were divided by a route. After field verification, it was determined that the route was substantially unnoticeable and did not have signs of mechanical maintenance; therefore, the two units become one. This unit is less than 5,000 acres but is adjacent to the Little Deer Wilderness Study Area. In BLM Manual 6310(06)(C)(2), it describes criteria in which areas less than 5,000 acres may contain wilderness characteristics. The following unit applied under the criteria of being contiguous with lands which have been formally determined to have wilderness or potential wilderness values, or any Federal lands managed for the protection of wilderness characteristics (BLM wilderness study areas).

Size: 1,900 acres

Naturalness: Portions of this unit were previously inventoried as part of the original Little Deer WSA inventory unit but was excluded from the WSA based on the presence of three access routes in the northern portion of the unit. At that time these routes were substantially noticeable imprints on the naturalness of the unit: however, these routes have become substantially unnoticeable over the years. This unit appears to have been affected primarily by the forces of nature. Human-made features and other impacts do not exist, or are substantially unnoticeable, within these units.

Outstanding opportunities for solitude or a primitive and unconfined type of recreation: In combination with the adjacent wilderness study area, this unit provides the same outstanding opportunities for solitude or primitive and unconfined recreation as found in the adjacent Little Deer WSA.

Supplemental values: None

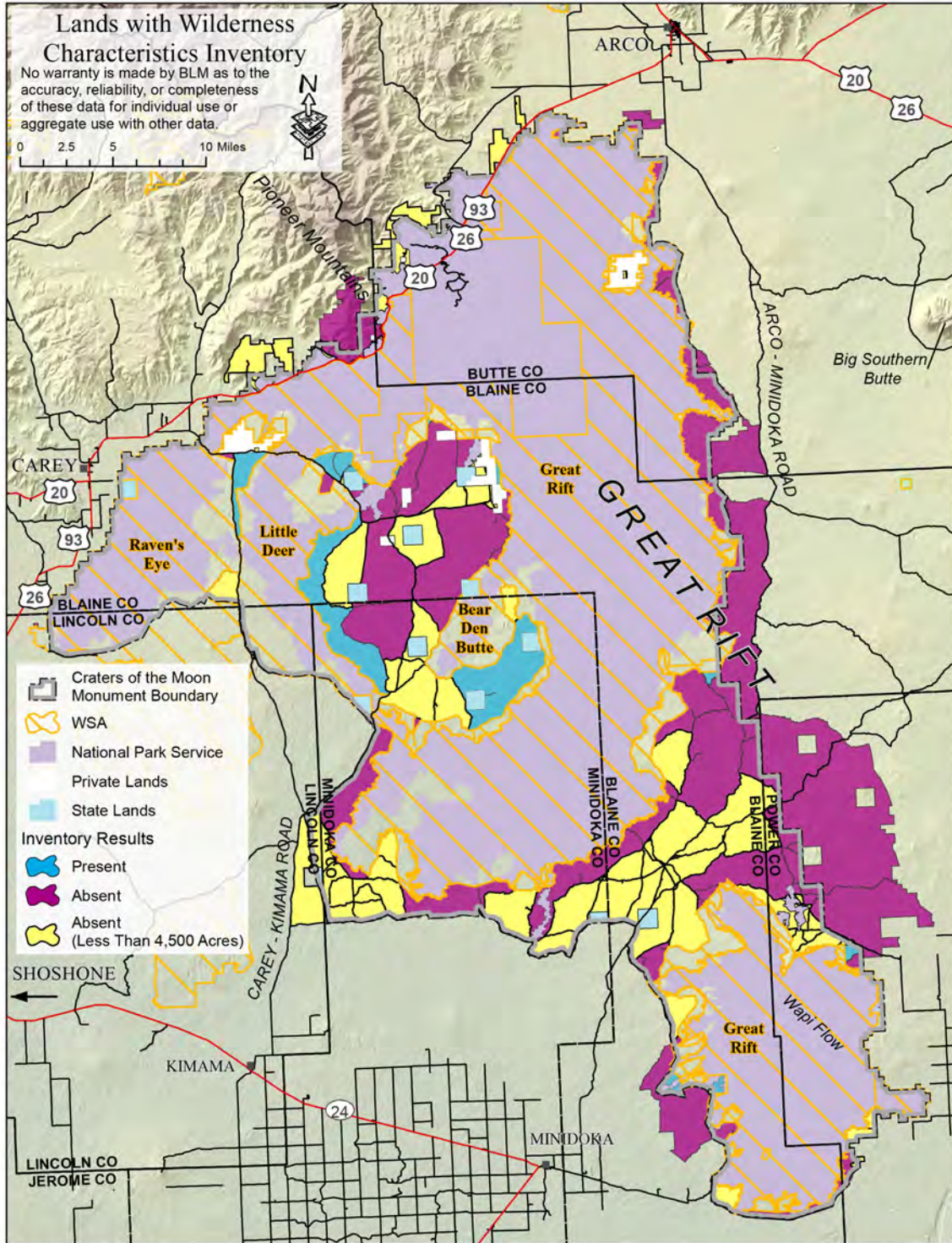


Figure G.8. Areas that Did Not Meet Size Criteria (Less Than 4,500 Acres)

Figure F.8 shows the areas that did not qualify as having wilderness characteristics because they were less than 4,500 acres and not adjacent to designated Wilderness or WSAs. These polygons were not visited in the field as they were already disqualified by size criteria.

Summary of Analysis*

Area Unique Identifier: See attached table for unique IDs, acreages, etc.

Summary

Results of analysis:

All inventory units do meet the required size necessary to qualify as an LWC unit per BLM Handbook 6310, but do not contain other characteristics such as solitude or outstanding primitive recreation opportunities that are essential wilderness characteristics, and therefore do not qualify.

(Note: explain the inventory findings for the entirety of the inventory unit. When wilderness characteristics have been identified in an area that is smaller than the size of the total inventory unit, explain why certain portions of the inventory unit are not included within the lands with wilderness characteristics (e.g. the inventory found that certain parts lacked naturalness).

Does the area meet any of the size requirements? Yes No

Does the area appear to be natural? Yes No N/A

Does the area offer outstanding opportunities for solitude or a primitive and unconfined type of recreation? Yes No N/A

Does the area have supplemental values? Yes No N/A

Check one:

The areas, or a portion of the areas, have wilderness characteristics and are identified as lands with wilderness characteristics.

The area(s) do(es) not have wilderness characteristics.

Prepared by (team members):

Blaine Potts, Outdoor Recreation Planner, 10/27/2015

Cassandra Mavencamp, GIS Specialist, 10/27/2015

(Name, Title, Date)

Reviewed by (District or Field Manager):

Name: Holly Crawford **Title:** Monument Manager

Date: 12/4/2015

* This form documents information that constitutes an inventory finding on wilderness characteristics. It does not represent a formal land use allocation or a final agency decision subject to administrative remedies under either 43 CFR parts 4 or 1610.5-3.

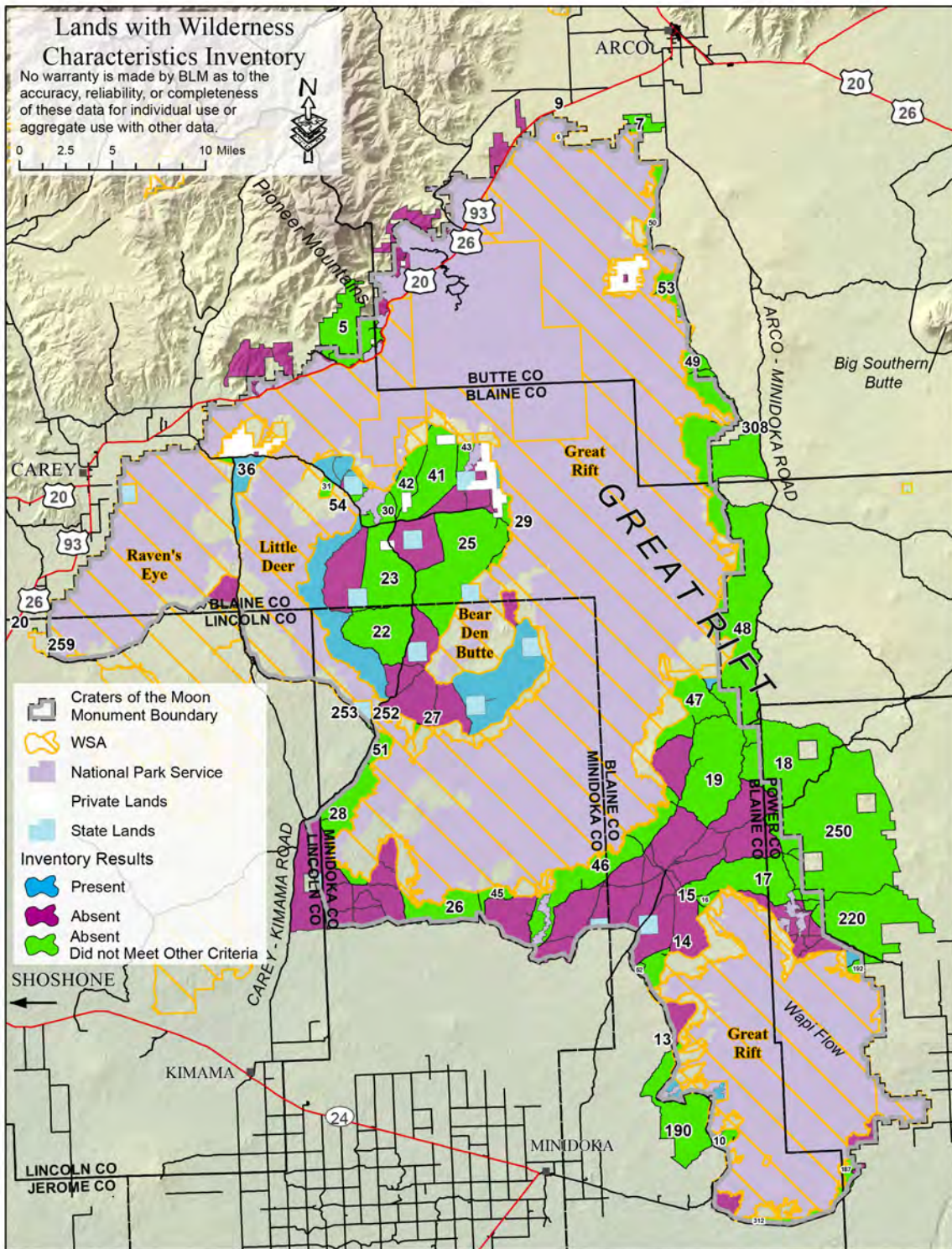


Figure G.9. Areas Greater than 4,500 Acres that Did Not Meet Other Criteria

Summary of Analysis*

Area Unique Identifier: See attached table for unique IDs, acreages, etc.

Summary

Results of analysis:

All inventory units fall below the required size necessary to qualify as an LWC unit per BLM Handbook 6310 and/or are not directly adjacent to other WSAs or designated Wilderness areas. As all units in this analysis did not meet size requirements and did not contain wilderness characteristics no unique id were assigned to these units, however the GIS object ids are a valid form of identification unique to each polygon and will be archived as such for future reference.

(Note: explain the inventory findings for the entirety of the inventory unit. When wilderness characteristics have been identified in an area that is smaller than the size of the total inventory unit, explain why certain portions of the inventory unit are not included within the lands with wilderness characteristics (e.g. the inventory found that certain parts lacked naturalness).

Does the area meet any of the size requirements? Yes No

Does the area appear to be natural? Yes No N/A

Does the area offer outstanding opportunities for solitude or a primitive and unconfined type of recreation? Yes No N/A

Does the area have supplemental values? Yes No N/A

Check one:

The area, or a portion of the area, has wilderness characteristics and is identified as lands with wilderness characteristics.

The area(s) do(es) not have wilderness characteristics.

Prepared by (team members):

Blaine Potts, Outdoor Recreation Planner, 10/27/2015

Cassandra Mavencamp, GIS Specialist, 10/27/2015

(Name, Title, Date)

Reviewed by (District or Field Manager):

Name: Holly Crawford **Title:** Monument Manager

Date: 12/4/2015

* This form documents information that constitutes an inventory finding on wilderness characteristics. It does not represent a formal land use allocation or a final agency decision subject to administrative remedies under either 43 CFR parts 4 or 1610.5-3.

Table G.1. Summary of Units that Do Not Meet Criteria for Naturalness and/or Outstanding Opportunities for Solitude or a Primitive and Unconfined Type of Recreation

Unit ID	Office Comments	Field Comments	Size	Acres	Naturalness	Naturalness Description	Primitive/Unconfined Recreation	Primitive/Unconfined Recreation Description	Solitude	Solitude Description	Inventory Date
5	Field Verify	See descriptions for comments.	Yes	5,700	No	3 old gravel pits, developed springs, and communications tower with access road exist along southern boundary.	N/A		N/A		June, 2014 for Craters MMP Amendment.
6	Field Verify	Route is still apparent on 2013 NAIP	Adj	128	No	Route through center, very visible from NAIP 2013	N/A		N/A		June, 2014 for Craters MMP Amendment.
7	Field Verify	Field verify-6-18-2014, polygon bisected by multiple roads	Adj	1,300	No	Polygon bisected by multiple roads	N/A		N/A		June, 2014 for Craters MMP Amendment.
9		See descriptions for comments.	Adj	158	No	Unit is adjacent and very small. Due to it's small size, the route identified is substantially noticeable. Heavily used route in unit.	N/A		N/A		June, 2014 for Craters MMP Amendment.

Unit ID	Office Comments	Field Comments	Size	Acres	Naturalness	Naturalness Description	Primitive/Unconfined Recreation	Primitive/Unconfined Recreation Description	Solitude	Solitude Description	Inventory Date
10	Field Verify	See descriptions for comments.	Adj	759	No	Routes access most of this unit around it and to its interior.	N/A		N/A		June, 2014 for Craters MMP Amendment.
13	Field Verify	See descriptions for comments.	Adj	118	No	Noticeable route straight through center of unit goes all the way to lava's edge.	N/A		N/A		June, 2014 for Craters MMP Amendment.
14	Field Verify	Route makes unit not adjacent to WSA.	Adj	1,200	N/A		N/A		N/A		June, 2014 for Craters MMP Amendment.
15	Field Verify	Route makes unit not adjacent; doesn't meet size criteria.	No	115	N/A		N/A		N/A		June, 2014 for Craters MMP Amendment.
16	Field Verify	Route makes unit not adjacent, doesn't meet size criteria.	No	371	N/A		N/A		N/A		June, 2014 for Craters MMP Amendment.
17	Field Verify	Route bisects unit and disqualifies each size because they do not meet the size criteria.	No	6,100	N/A		N/A		N/A		June, 2014 for Craters MMP Amendment.

Unit ID	Office Comments	Field Comments	Size	Acres	Naturalness	Naturalness Description	Primitive/Unconfined Recreation	Primitive/Unconfined Recreation Description	Solitude	Solitude Description	Inventory Date
18	Field Verify	See descriptions for comments.	Yes	10,100	No	Area has multiple routes that have signs of mechanical maintenance.	N/A		N/A		June, 2014 for Craters MMP Amendment.
19	Field Verify	See descriptions for comments.	Yes	9,300	No	Unit contains numerous routes that have signs of mechanical maintenance.	N/A		N/A		June, 2014 for Craters MMP Amendment.
20	Field Verify	See descriptions for comments.	Adj	45	No	Heavily used route within unit. Traffic on Hwy 26/93 and sites of Carey are visible through most of unit.	N/A		N/A		June, 2014 for Craters MMP Amendment.
22	Field Verify	In addition to the noted range sites that negate naturalness, the area does not offer much outstanding solitude with many of the routes throughout the Laidlaw area being quite noticeable.	Yes	5,400	No	Southern boundary and eastern boundary contains substantially noticeable bedgrounds and range improvements.	N/A		N/A		June, 2014 for Craters MMP Amendment.

Unit ID	Office Comments	Field Comments	Size	Acres	Naturalness	Naturalness Description	Primitive/Unconfined Recreation	Primitive/Unconfined Recreation Description	Solitude	Solitude Description	Inventory Date
23	Field Verify	See descriptions for comments.	Yes	5,900	No	Many range improvements. Substantially noticeable wild-fire impacts: dozer-lines and seedings.	N/A		N/A		June, 2014 for Craters MMP Amendment.
25	Field Verify	See descriptions for comments.	Yes	11,400	No	Unit contains numerous human impacts such as dozer-lines, range improvements, a RAWS station, fences, and multiple routes.	N/A		N/A		June, 2014 for Craters MMP Amendment.
26	Field Verify	See descriptions for comments.	Adj	3,700	No	Two stock ponds along southern boundary and range management route through center, running east-west. Human impacts are substantially noticeable.	N/A		N/A		June, 2014 for Craters MMP Amendment.
27	Field Verify	See descriptions for comments.	Adj	120	No	Bottleneck Lake and route negates naturalness.	N/A		N/A		

Unit ID	Office Comments	Field Comments	Size	Acres	Naturalness	Naturalness Description	Primitive/Unconfined Recreation	Primitive/Unconfined Recreation Description	Solitude	Solitude Description	Inventory Date
28	Field Verify	See descriptions for comments.	Adj	4,500	No	Steamboat Lake area contains lots of impacts such as range improvements, dozer-lines, and routes.	N/A		N/A		
29	Field Verify	See descriptions for comments.	Adj	729		Unit contains 3 reservoirs that are along the western boundary that are substantially noticeable. Each one has access routes.	N/A		N/A		
31	Field Verify	Doesn't meet size criteria and is not adjacent to WSA due to noticeable two-track.	No	403	N/A		N/A		N/A		
36	Field Verify	Doesn't meet size criteria. Two-track along south	No	132	N/A		N/A		N/A		June, 2014 for Craters MMP Amendment.
41	Field Verify	See descriptions for comments.	No	5,000	N/A		N/A		N/A		June, 2014 for Craters MMP Amendment.

Unit ID	Office Comments	Field Comments	Size	Acres	Naturalness	Naturalness Description	Primitive/Unconfined Recreation	Primitive/Unconfined Recreation Description	Solitude	Solitude Description	Inventory Date
42	Field Verify	See descriptions for comments.	Adj	2,000	No	A maintained landing strip exists in northern portion. Access road to water trough near Big Blowout Butte.	N/A		N/A		June, 2014 for Craters MMP Amendment.
43	Field Verify	See descriptions for comments.	Adj	659			N/A		N/A		June, 2014 for Craters MMP Amendment.
323	Field Verify	See descriptions for comments.	N/A	794	No		N/A		N/A		June, 2014 for Craters MMP Amendment.
46	Field Verify	See descriptions for comments.	Yes	7,400	No	Visible drill-seeding rows. Jeep trails bisect polygon.	N/A		N/A		June, 2014 for Craters MMP Amendment.
47	Unit is not adjacent due to routes along boundary of WSA.	See descriptions for comments.	No	4,000	N/A		N/A		N/A		June, 2014 for Craters MMP Amendment.

Unit ID	Office Comments	Field Comments	Size	Acres	Naturalness	Naturalness Description	Primitive/Unconfined Recreation	Primitive/Unconfined Recreation Description	Solitude	Solitude Description	Inventory Date
48	Field Verify	See descriptions for comments.	Yes	26,100	No	Dozer-lines, range improvements, mowed strips, and routes that have signs of mechanical maintenance are all within unit.	N/A		N/A		June, 2014 for Craters MMP Amendment.
49	Field Verify	See descriptions for comments.	Adj	958	No	Highly noticeable human impacts and range improvements.	N/A		N/A		June, 2014 for Craters MMP Amendment.
345	Field Verify	See descriptions for comments.	Adj	1,500	No	Visible routes in unit. Some lead to range improvements.	N/A		N/A		June, 2014 for Craters MMP Amendment.
51	Field Verify	See descriptions for comments.	N/A	1,100	No	Reservoirs have substantially noticeable berms.	N/A		N/A		June, 2014 for Craters MMP Amendment.
52	Field Verify, is two-track a disturbance?	Route makes unit not adjacent to WSA.	N/A	225	N/A		N/A		N/A		June, 2014 for Craters MMP Amendment.
53	Field Verify	See descriptions for comments.	Adj	1,638	No	Unit contains multiple routes and highly visible and impacted range improvements.	N/A		N/A		June, 2014 for Craters MMP Amendment.

Unit ID	Office Comments	Field Comments	Size	Acres	Naturalness	Naturalness Description	Primitive/Unconfined Recreation	Primitive/Unconfined Recreation Description	Solitude	Solitude Description	Inventory Date
54	Field Verify	Split unit 54 at two-track that goes through from state section. North part is adjacent to WSA. South part does not meet size criteria.	No	196	N/A		N/A		N/A		June, 2014 for Craters MMP Amendment.
187	May, 2011 for Gateway West. See metadata process steps for details. Does not meet size, but meets adjacency criteria.	See descriptions for comments.	Adj	1,400	No	Effects (sound/ infrastructure) of railroad in immediate area can not be ignored.	N/A		N/A		November, 2011. MSTI review
190	May, 2011 for Gateway West. See metadata process steps for details. Meets size criteria.	See descriptions for comments.	Yes	6,300	No	Effects (sound/ infrastructure) of railroad in immediate area can not be ignored.	N/A		N/A		September, 2011. MSTI Review

Unit ID	Office Comments	Field Comments	Size	Acres	Naturalness	Naturalness Description	Primitive/Unconfined Recreation	Primitive/Unconfined Recreation Description	Solitude	Solitude Description	Inventory Date
192	May, 2011 for Gateway West. See metadata process steps for details. Does not meet size, but meets adjacency criteria.	See descriptions for comments.	Adj	666	No	Effects (sound/ infrastructure) of railroad in immediate area can not be ignored.	N/A		N/A		November, 2011. MSTI
220	May, 2011 for Gateway West. See metadata process steps for details. Meets size criteria.	See descriptions for comments.	Yes	9,300	No	Effects (sound/ infrastructure) of railroad in immediate area can not be ignored.	N/A		N/A		September, 2011. MSTI review.
250	May, 2011 for Gateway West. See metadata process steps for details. Meets size criteria.	See descriptions for comments.	Yes	23,500	No	Effects (sound/ infrastructure) of railroad in immediate area can not be ignored.	N/A		N/A		September, 2011. MSTI review
252	May, 2011 for Gateway West. See metadata process steps for details. Does not meet size, but meets adjacency criteria.	Unit is not adjacent to WSA.	No	70	N/A		N/A		N/A		

Unit ID	Office Comments	Field Comments	Size	Acres	Naturalness	Naturalness Description	Primitive/Unconfined Recreation	Primitive/Unconfined Recreation Description	Solitude	Solitude Description	Inventory Date
253	May, 2011 for Gateway West. See metadata process steps for details. Does not meet size, but meets adjacency criteria.	Unit is not adjacent to WSA.	No	67	N/A		N/A		N/A		
259	May, 2011 for Gateway West. See metadata process steps for details. Does not meet size, but meets adjacency criteria.	See descriptions for comments.	Adj	22	No	Effects (sound/ infrastructure) of railroad in immediate area can not be ignored.	N/A		N/A		May, 2011 for Gateway West. See metadata process steps for details.
308	May, 2011 for Gateway West. See metadata process steps for details. Does not meet size, but meets adjacency criteria.	Unit is not adjacent to WSA. It is cut off from surrounding inventory units by a substantial two-track	No	47	N/A		N/A		N/A		
312	May, 2011 for Gateway West. See metadata process steps	See descriptions for comments.	Adj	571	No	Effects (sound/ infrastructure) of railroad in immediate	N/A		N/A		November, 2011. MSTI

Unit ID	Office Comments	Field Comments	Size	Acres	Naturalness	Naturalness Description	Primitive/Unconfined Recreation	Primitive/Unconfined Recreation Description	Solitude	Solitude Description	Inventory Date
	for details. Does not meet size, but meets adjacency criteria.					area can not be ignored.					

The above figure and table provide a summary of areas that met the size criteria, but did not meet criteria for naturalness, provide for outstanding opportunities for solitude, and/or a primitive and unconfined type of recreation.